

Local Governance Roundtable: Preparedness and Response Plans

Earthquake Resilience Conference

May 20 2015, Makati City

Metro Manila cities transected by the West Valley Fault:

- Quezon City
- Marikina
- Pasig
- Makati
- Taguig
- Muntinlupa



Highly Vulnerable Areas

Type of Vulnerability

Area

Flammability and Evacuation Difficulty

- Navotas Bay Area
- Manila North Port Area
- South Eastern Manila City Area
- Central Manila Bay Area

Building Collapse and Evacuation Difficulty

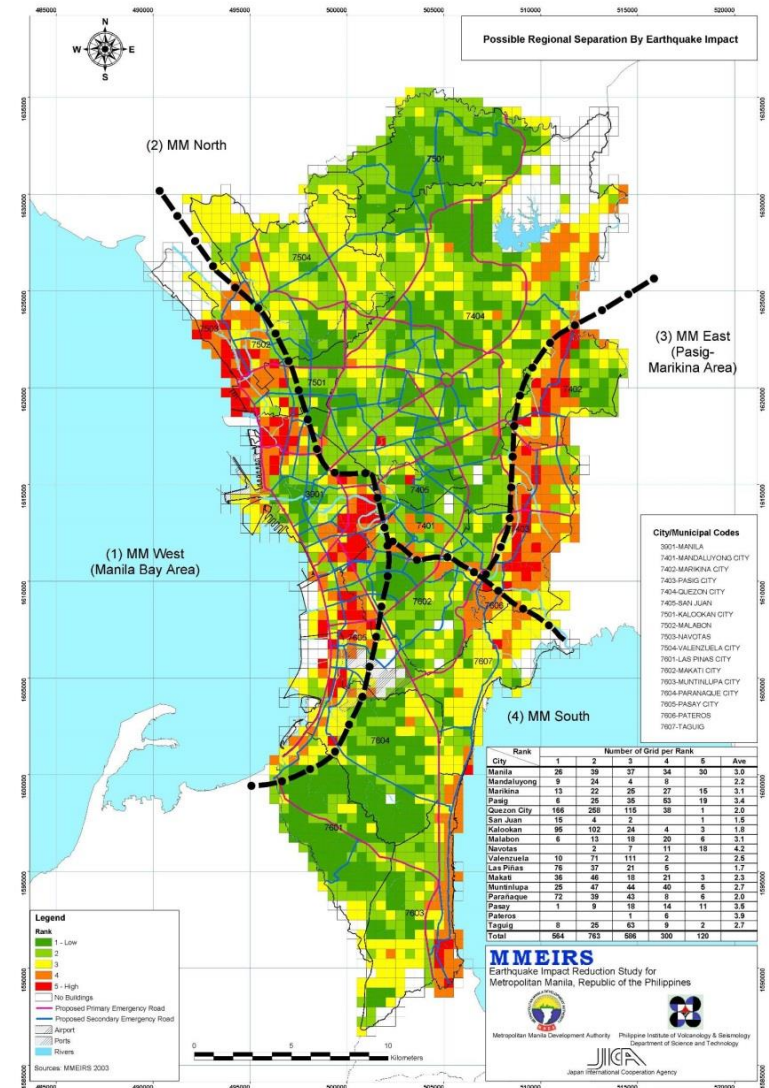
- North Eastern Quezon City Area
- Western Marikina City Area
- Eastern Pasig City Area
- Muntinlupa Laguna Bay Area
- Mandaluyong-Makati City Border Area

Flammability

- Valenzuela-Caloocan South-Quezon City west intersection

Evacuation Difficulty

- Metro Manila Northern Fringe
- Taguig Fringe
- Las Pinas Fringe



Estimated Casualties and Damages

	Estimated Dead	Estimated Injured Individuals	Estimated No. of Collapsed Buildings	Estimated Fire Burnout Areas and Buildings	Estimated No. of Vulnerable Individuals
	(MMEIRS, 2004)				City Data, 2014
Makati City	2,300	7,500	8,900	53 hA/ 2,000 bldgs	12,000
Pasig City	3,400	11,800	22,800	35 hA/ 2,200 bldgs	23,000
Quezon City	5,500	18,700	25,800	115 hA/ 4,900 bldgs	120,000

Sources: MMEIRS, 2004; Quezon City/Pasig City/Makati City 2014 Statistics

MMDRRMC-MMDA EARTHQUAKE DISASTER RESPONSE ORGANIZATIONAL STRUCTURE

TASK FORCE "RAINBOW"

**TF "RAINBOW"
COMMANDER**

**TF "RAINBOW"
ASST CMDR**

ADMIN SPT & LOGISTICS
AGM for Finance & Admin

Personnel Benefits & Admin

Supplies & Logistics

EMERG OPNS CENTER

- Situation Analysis
- Operations Control
- Coordination
- Communications
- Public Information

DANA & PLANNING
AGM for Planning

Planning Section

Damage and Needs Assessment Teams

Emergency Communicat'n Group

Burial Services Group

Search & Rescue Group

Debris Clearing Group

Traffic Management & Ctrl Group

Emergency Engineering Group

MMDRRMC
Volunteers & Vol Orgs

Emergency Transport Group

Rehabilitation Services Group

Camp Sanitation and Health Mgt

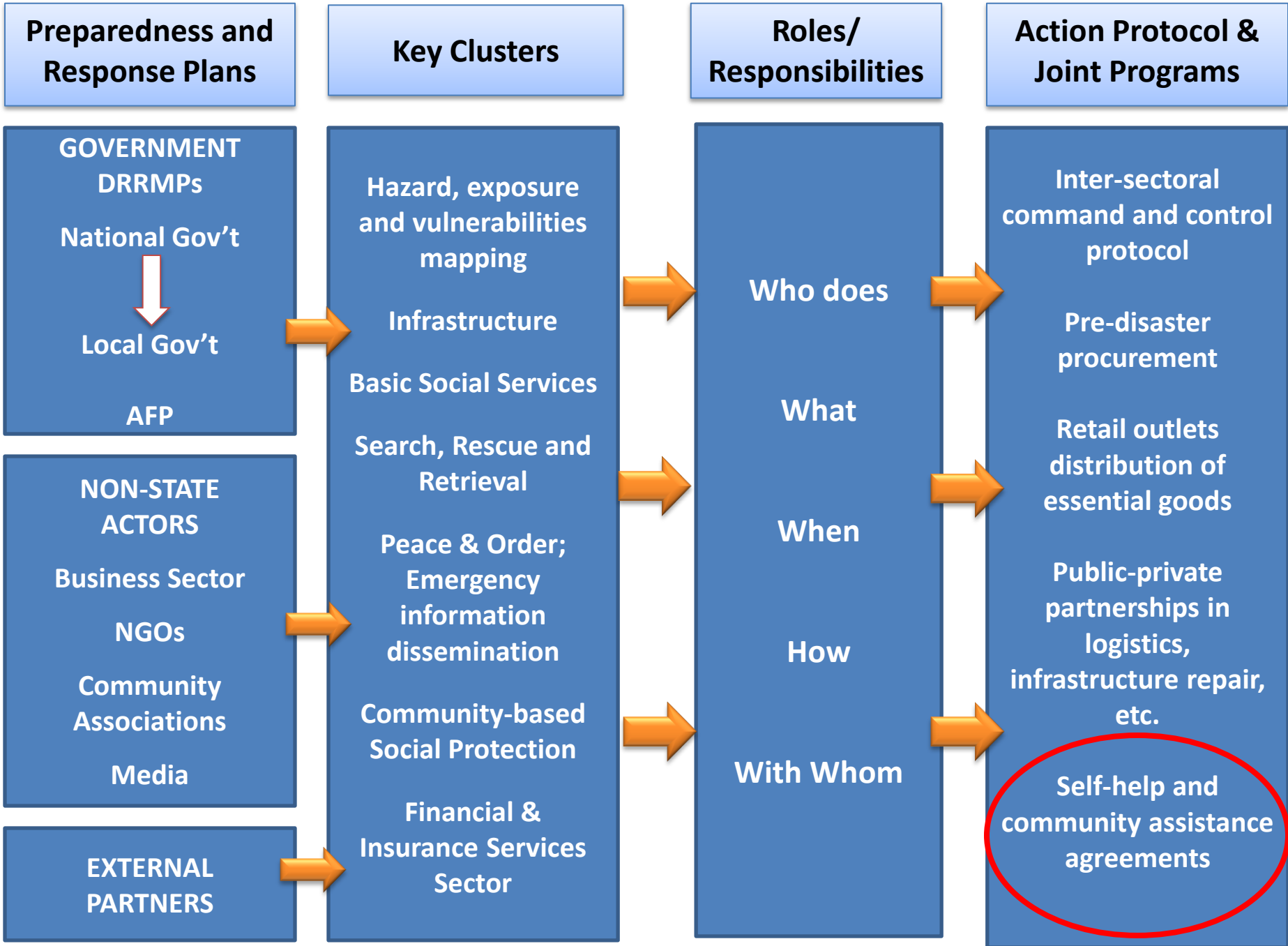
Relief Services Group

North Sub-Task Force

West Sub-Task Force

East Sub-Task Force

South Sub-Task Force



Collaboration and Coordination

